

Printed Patches

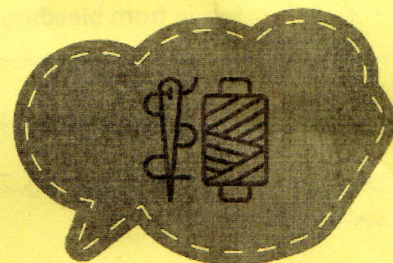
Application Instructions

Printed Patches have two application options - either sew on or iron on. We recommend looking at the material on which you're placing the patch and then reviewing the application recommendations below.

RECOMMENDED APPLICATION - SEW-ON

Printed Patches can be sewn on to almost all materials. To get the best and long term result, we recommend to sew the patch on the materials listed below.

Denim | Leather, Suede | Toques & scarves | Fleece, Stretch fabric | Terry knit (towel, bathrobe, etc), Rib knit | Pique knit | Treated fabrics (coatings, sizing, repellents) | Nylon | Synthetics | Nylon-shell | Interlinings | Rubberized coating | Reflective fabric (jacket, luggage)



Sew-On Best Practices

- It is recommended to use similar colour thread as the stitched border and sew close to the border.

Sew-On Care Instructions

- Wash the garment inside out.
- For best results, hang to dry.
- Do not bleach.
- Wash in cold water - mild detergent.
- Do not dry clean.

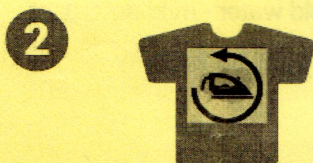
ALTERNATIVE APPLICATION - IRON-ON

The Iron-on application of Patches to garments or other textile products directly relates to the size of the Patch and the type of material that the Patch will be attached to. **TEST** the fabric for heat tolerance by ironing a non visible portion of the material. Patches should be Ironed on both front and the back side of the garment. **WASH & DRY** garment before ironing.

Recommended materials for Iron-on: 100% Cotton, 100% Linen, 100% Polyester, Cotton-Poly blend, Spandex blend



PREHEAT. Use a dry iron (no steam), set to maximum heat setting. Preheat for 3 minutes. Iron on a hard surface like a table. We recommend placing a low pile bath towel under the garment, this will allow pressure to be spread evenly within the threaded border. Iron the area where the Patch will be applied for 5 seconds to remove wrinkles and moisture in the garment.

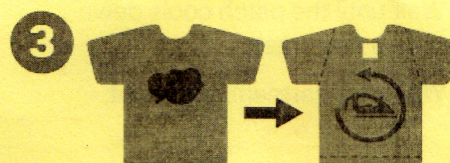


PLACE the Patch on the garment with the image side facing up.

IMPORTANT! Cover the Patch fully with the parchment paper provided or a flat pillowcase.

DO NOT iron directly on the Patch, it may burn the thread on the edge

IRON using FIRM pressure for 30 seconds in a circular motion inside the stitched border.



IRON REVERSE SIDE OF GARMENT.

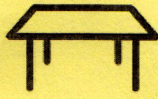
Once the Patch is secured to the garment at the desired location, **turn the garment inside out.**

IRON using FIRM pressure for about 30 seconds directly on the garment. If the Patch is not fully adhered to the garment, iron for additional 10 seconds intervals (with 2 seconds off to avoid burning the garment) until the back side of the Patch adheres to the garment. Larger Patches may require more time and heat.

Iron-On Best Practices




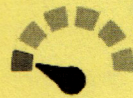
 No Ironing Board




 Iron On a Table



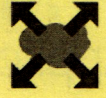
 No Steam



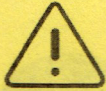
 Use Maximum Heat Setting



 Use FIRM Pressure



 Iron Entire Patch



IMPORTANT: Wash and dry your garment before applying your Patch. This will avoid any dye from the fabric from bleeding through onto your iron-on Transfer.

- Iron on a hard and flat surface (like a table), covered with a low pile bath towel.
- Use the maximum heat setting. The heat setting used will depend on the fabric and individual iron as the heat output varies between irons.
- Do not use the steam setting on the iron. Steam will prevent the transfer from adhering to the fabric.
- We do not recommend using ironing boards as they are often soft and padded, can cause unevenness.
- Thicker fabrics may require longer time for ironing than the time mentioned above.
- Pique knit and fleece materials may be sensitive to heat and pressure, with the possibility of being crushed.
- Rib-knit and stretch fabrics may pucker or distort when Patches are Ironed on to them. It is recommended that these fabrics be tested first. For items such as toques and scarves, it is recommended to have Patches sewn on rather than Ironed on.
- Terry knit materials such as towels and bathrobes may not provide a smooth enough surface for proper Iron on application. It is recommended that Patches be sewn on to these types of products.
- Treated fabrics finished with coatings, sizing or repellents may not allow for proper Ironing bonding.

Iron-On Care Instructions

- Wait until the patch cools down before first wash.
- Wash in cold water - mild detergent.
- Do not dry clean.
- Wash the garment inside out.
- For best results, hang to dry.
- Do not bleach.